

Finding Shoreline Therapy at Paddlers Cove



Paddlers Cove is at **300 Prince Albert Road** on Lake Banook.

It's across the street from Needs Convenience/Fast Fuel.

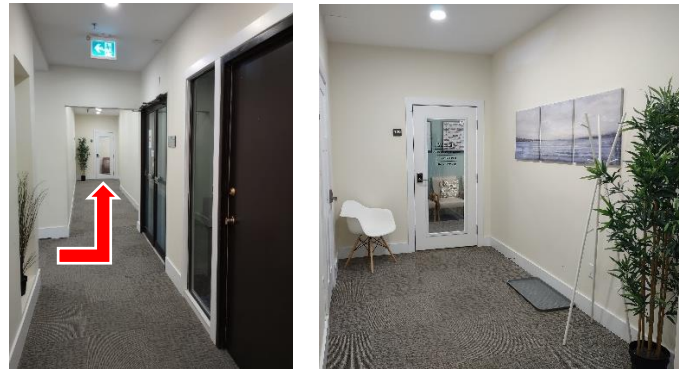


The **main entrance** to the building faces the lake.

Enter through the **door on the right**.



Go **through the double doors** on the left side of the lobby.



Turn **left** at the end of the hall.

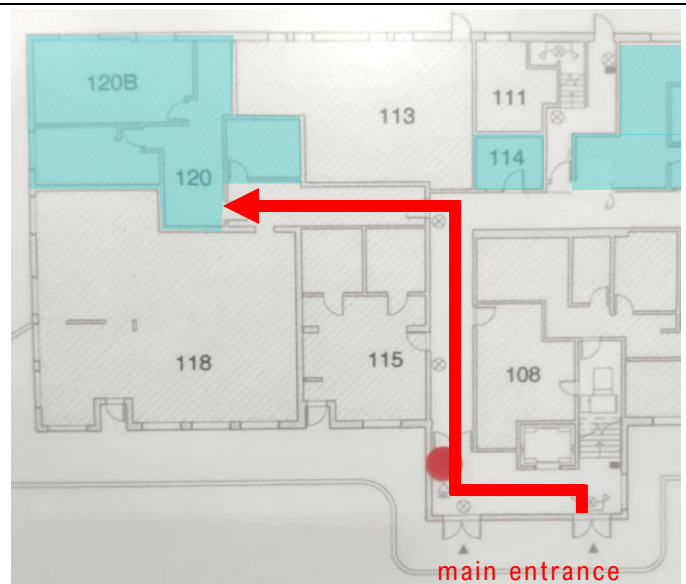
Unit 120 is at the very end of the hall.

If you have a stroller, you can park it here.



Have a seat in the **waiting area**.

We'll meet you there.



main entrance
to building