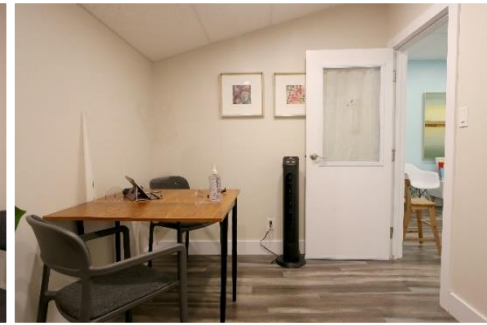


Information About the Space

Clinical Room 1

Shoreline Speech Therapy has a clinical room available for rent to other health professionals. It is best suited for counselling professionals such as psychologists, counselling therapists, and clinical therapists or other allied health professionals such as occupational therapists and behavioural interventionists.

There is a storage closet in this room. Those who rent this room can store some personal items in this closet. It's primarily used to store the room's furniture when it is not in use (e.g., various set ups for counsellors vs psychologists vs SLPs). There are hooks so you have a place to put your outerwear. The desk in the room converts to a larger table.



Information About the Office

Shoreline Speech Therapy moved into the space in June 2020. Prior to that, we were located in the adjacent Professional Centre from June 2018 – June 2020.

HVAC

There is a heat pump that provides air conditioning in the unit. It is located in the large back office area, but there is no direct feed into the clinical rooms. Fans are provided to augment cooling in the summer months. There are baseboard heaters in each of the clinical rooms for the fall and winter.



Sound Proofing

There is sound proofing material in the ceiling and walls. There are also strips around the doors to the clinical rooms to attenuate sound transfer. When needed, we also have a white noise machine in the waiting room to further protect clients' privacy.



Shoreline's Office Dog

Paddlers Cove is a dog friendly building; you will often see dogs on the patio outside the Cottage Café and accompanying business owners/employees to work. Shoreline's "office dog" is named Kate (Amstaff). Kate stays in the back office whenever there are clients in the space.



Access to the Space

The building is accessed by key and unit 206 by keycode. Shoreline does not have set hours; our clinicians set their own hours based on appointments. Typically, clients are seen Tuesday to Friday between 9am and 8pm and on Saturdays from 9am to 6pm. Those renting room 1 are not restricted to these hours.

Information About the Building

Paddlers Cove is a Class B commercial building located on Lake Banook. The building was purchased by Stillwater Property Group several years ago. There are ongoing renovations inside and outside the building.

There are other health professional practices in the building, such as Cove Sport Therapy (physiotherapists), VanHorne Counselling (clinical therapist), and Coastal Therapy & Assessment (psychologists).

Accessibility

The second floor is accessed by stairs. Stillwater is planning to make the second floor more accessible by adding a chairlift, but there is no timeline for completion. The main stairs have a handrail on one side. The back stairwell closest to Unit 206 has handrails on both sides.

The curbs are graded at the entrances. There are 3 accessible parking spots. The exterior doors do not open automatically.

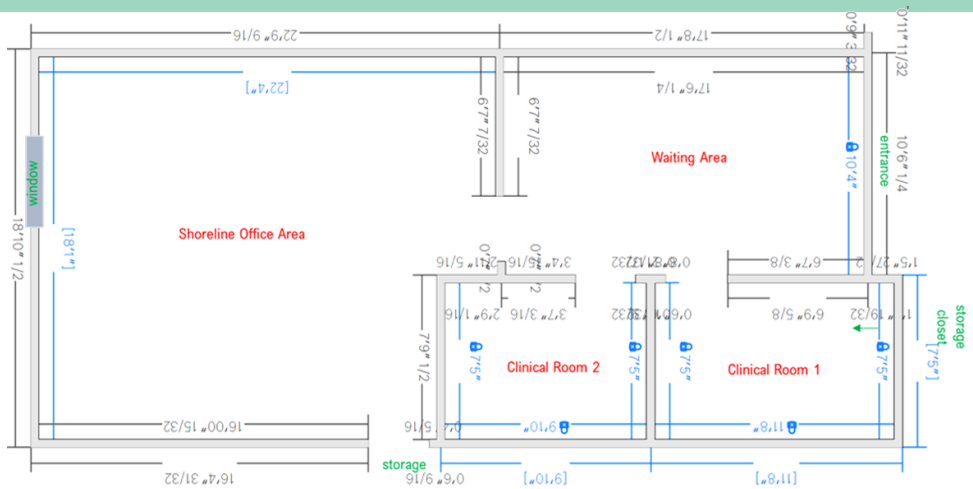
Parking

Parking is free. Stillwater has no plans to start charging for parking. There is additional parking in the empty lot across the street.

Neighbourhood

Robin's Donuts and Sobeys Need's Convenience are across the street. The Cottage Café is located in the building. The Atlantic Superstore is a 10-minute walk away. Mic Mac Mall is a 20-minute walk or 5-minute drive away. Paddlers Cove is located on the walking trail that runs along Lake Banook.

The 62 route stops outside Paddlers Cove. The Mic Mac Mall bus terminal is a 20-minute walk away. The 55 route has a stop a 10-minute walk away and the 54 route has a stop a 15-minute walk away.



Terms & Availability

\$125/month for one evening a week, 4-9pm (5h)

\$100 for one morning or evening a week, 8am-12pm or 12pm-4pm (4h)

\$200/month for one day a week, 8:30am-4pm (7.5h)

There is no additional HST at this time.

Please contact us if you would like to ask about alternative time frames (\$25/hr).

For clinicians who work with children, use of Shoreline's toy and game collection is available for \$20/month.

One month's notice is required by both parties to terminate any agreement to rent the office. The monthly rental amount will be paid regardless of the amount of use by the clinician. The rent is due on the first of the month. A late fee of \$25/day will be charged for late payment. Failure to pay the rent will result in any agreement being terminated.

Availability

	Monday	Tuesday	Wednesday	Thursday	Friday	Saturday	Sunday
morning	available	x	x	available	available	(available in September)	available
afternoon	available	x	x	available	available	available	available
evening	x	x	x	x	available	available	available

Professional Requirements

Those applying to rent the space must provide proof of registration or membership with an appropriate regulatory college or professional association.

Responsibilities

Shoreline is responsible for the following:

1. Routine cleaning of the clinical room rented and common spaces in the office including dusting, mopping, disinfecting surfaces, emptying of garbage cans.
2. Providing a safe working space.

Renters are responsible for the following:

1. The supply of their own personal protective equipment (e.g., face masks) and hand sanitizer for use by their clients when in the room.
2. If they are the last to leave Paddlers Cove, for locking the exterior doors to the building.
3. During the COVID pandemic, to follow all Public Health orders and guidelines, to follow the sector plan of their respective College, and to follow the protocols of Shoreline. The renter is also responsible for ensuring that their clients follow all requirements.

Contact

Pamela Coulter, M.Sc., SLP-Reg, SLP(C)
Owner & Clinic Manager

pcoulter@shoreline-speech.com
(902) 219-3065